



MAINLINE®

# Stainless Steel End Stops

## Product Specifications

### PRODUCT FEATURES

- Stainless Steel
- Push Connect Installation
- Safe for potable water
- Maximum Working Pressure: 200 PSI
- Maximum Temperature Rating: 200°F
- Compatible with Copper, CPVC, & PEX
- Behind the wall or direct burial

### MATERIALS

- Body Construction: AISI 304 Stainless Steel
- O-Ring: EPDM
- Grip Ring: AISI 301 Stainless Steel
- Tube Stiffener: Glass-filled Nylon (1/2"-1") or Copper (1-1/4"-2")

### PERFORMANCE

- Max Pressure: 200 PSI
- Max Temp: 200° F

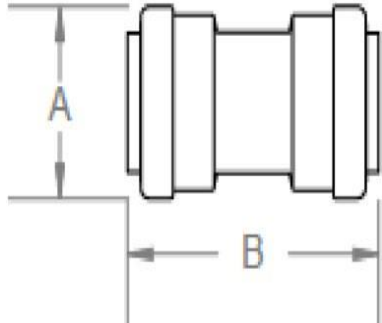
### APPLICABLE STANDARDS/CODES

- IAPMO
- ASSE 1061 (Push Fit Fittings – UPC, IPC, cUPC)
- NSF/ANSI 372
- NSF/ANSI/CAN 61 – Sec. 9: Q≤1



Fitting Size	Insertion Depth
1/2"	1"
3/4"	1-3/16"
1"	1-3/16"
1-1/4"	1-7/8"
1-1/2"	2-1/8"
2"	2-3/16"

✓ To Submit	Part #	Size	A	B
	MLSS816R	1/2"	1.06"	1.01"
	MLSS826R	3/4"	1.35"	1.26"
	MLSS836R	1"	1.75"	1.29"
	MLSS856R	1-1/4"	2.12"	1.93"
	MLSS866R	1-1/2"	2.57"	2.2"
	MLSS876R	2"	2.95"	2.3"



### Warranty

See warranty information for more details.

All dimensions listed are nominal. MAINLINE® reserves the right to make product and material changes at any time without notice.



Contact your sales representative for more information or visit our website at [mainlinecollection.com](http://mainlinecollection.com)