

BRASS DEEP SEAL CLOSET FLANGE RING

Product Specifications

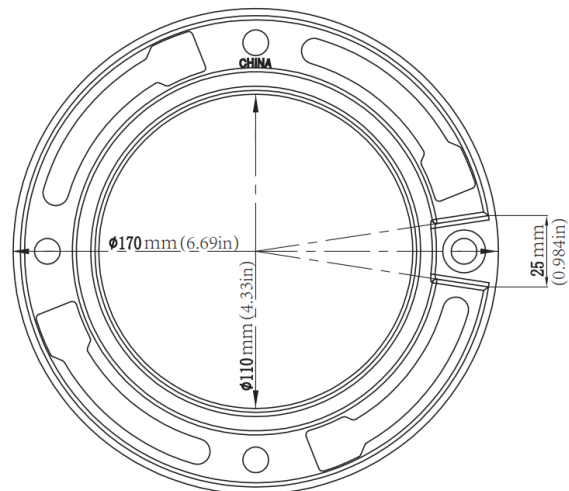
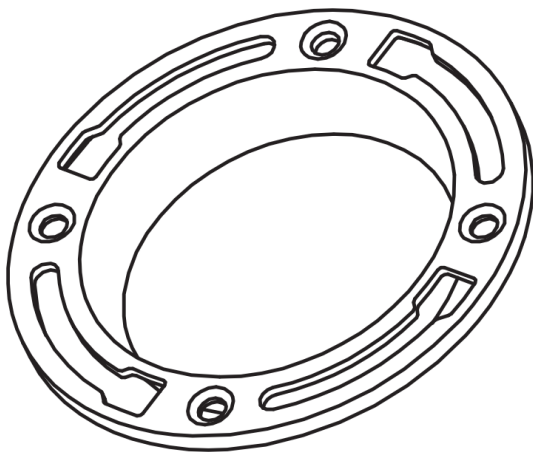
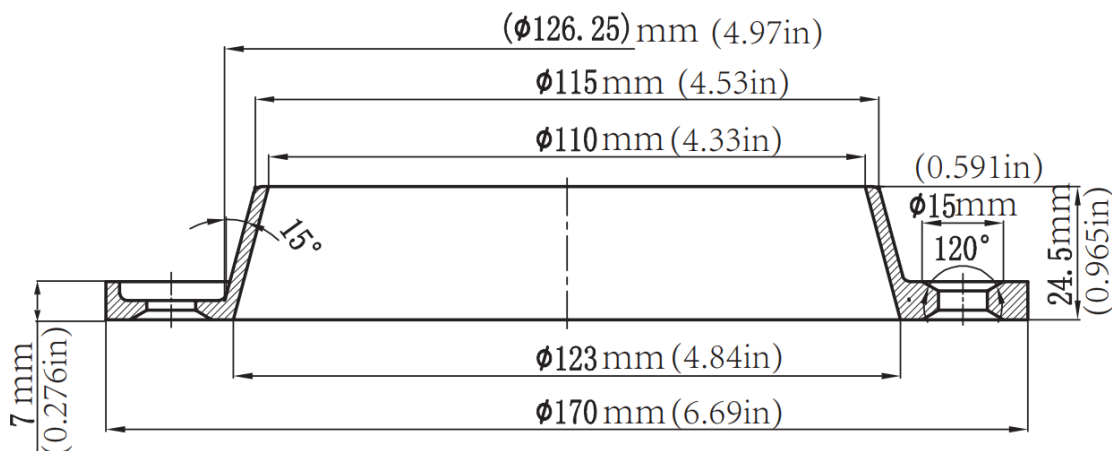


FEATURES

- 4" Deep Seal Brass Closet Flange
- Used for replacing rusted or corroded toilet flange rings
- Deep seal model provides more surface area for better joint
- Cast brass construction
- Includes 4 radial bolt holes and 4 closet bolt slots for secure attachment to the floor
- Simple installation



MLCI200



Warranty

See warranty information for more details.

All dimensions listed are nominal. MAINLINE® reserves the right to make product and material changes at any time without notice.



Contact your sales representative for more information or visit our website at mainlinecollection.com