

Brass Slotted Head Cleanout Plugs - LA Style

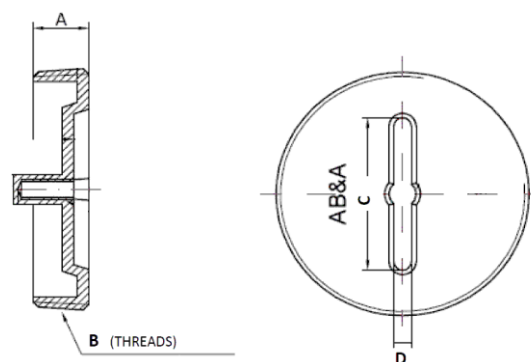
Product Specifications

FEATURES

- Sizes 1-1/2" to 6"
- Countersunk Slotted Head
- Available Tapped 1/4"
- Los Angeles Pattern



✓ To Submit	Part #	Tapped	Description
	ML68828	n/a	1-1/2" Brass Slotted Head
	ML68650	n/a	2" Brass Slotted Head
	ML68651	n/a	2-1/2" Brass Slotted Head
	ML68652	n/a	3" Brass Slotted Head
	ML68653	n/a	3-1/2" Brass Slotted Head
	ML68654	n/a	4" Brass Slotted Head
	ML68829	n/a	5" Brass Slotted Head
	ML68830	n/a	6" Brass Slotted Head
	ML68656	5/16"	2" Brass Slotted Head
	ML68831	5/16"	2-1/2" Brass Slotted Head
	ML68657	5/16"	3" Brass Slotted Head
	ML68658	5/16"	3-1/2" Brass Slotted Head
	ML68659	5/16"	4" Brass Slotted Head
	ML68832	5/16"	5" Brass Slotted Head
	ML68833	5/16"	6" Brass Slotted Head
	ML69257	1/4"	1-1/2" Brass Slotted Head
	ML69267	1/4"	2" Brass Slotted Head
	ML69258	1/4"	2-1/2" Brass Slotted Head
	ML69284	1/4"	3" Brass Slotted Head
	ML69290	1/4"	3-1/2" Brass Slotted Head
	ML69291	1/4"	4" Brass Slotted Head
	ML69285	1/4"	5" Brass Slotted Head



DIMENSIONS (in)			
A	B	C	D
0.622	1-1/2", 11-1/2 NPT	0.968	0.22
0.642	2", 11-1/2 NPT	1.22	0.22
0.759"	2-1/2", 8 NPT	1.64	0.22
0.759	3", 8 NPT	1.90	0.22
0.779	3-1/2", 8 NPT	2.09	0.22
0.866	4", 8 NPT	2.25	0.22
0.855	5", 8 NPT	2.74	0.22

Warranty

See warranty information for more details.

All dimensions listed are nominal. MAINLINE® reserves the right to make product and material changes at any time without notice.

Contact your sales representative for more information or visit our website at mainlinecollection.com