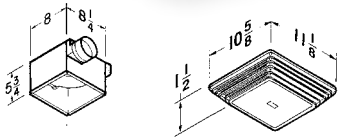
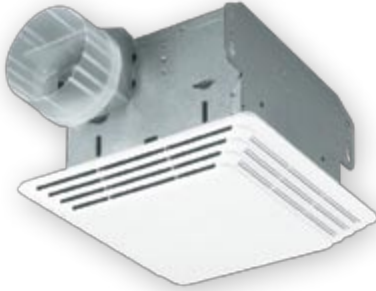


## Ceiling Mount



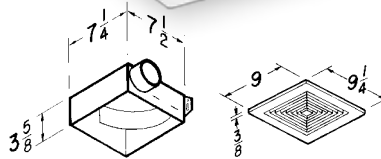
- 80 to 110 CFM
- Centrifugal blower wheel and 4-pole motor deliver high exhaust capacity at low sound levels
- White polymeric grille complements virtually any decor
- Torsion spring grille mounting—no tools necessary
- Metal grille kits (available separately)
- \*Project Packs available

Model	CFM	Sones
676	110	4.0
684	80	2.5

\*Project Packs are convenient options for today's contractor. Broan "H" Packs include rough-in housings only, making multi-unit installation more convenient. "F" Packs allow motor/blower and grille assemblies to be ordered separately, nearer project completion, to help avoid losing or having to store components.



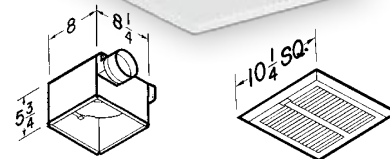
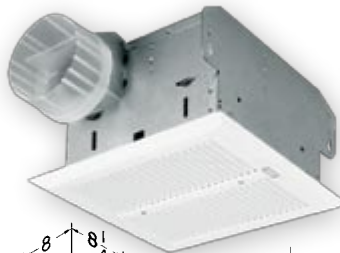
## Ceiling/Wall Mount



- 50 to 70 CFM
- Powerful centrifugal blower wheel
- Compact housing fits between ceiling joists or wall studs
- Double-strength steel mounting flanges with keyhole slots for fast installation
- Metal grille kits (available separately)
- \*Project Packs available for most models

Model	CFM	Sones	Notes
670	50	3.5	Wall/Ceiling mount
671	70	6.0	Wall/Ceiling mount
688	50	4.0	Wall/Ceiling mount
689	60	5.5	Wall/Ceiling mount

## Heavy-duty operation



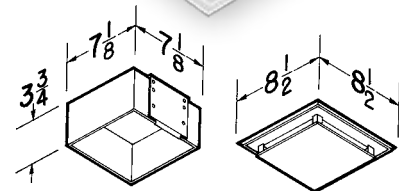
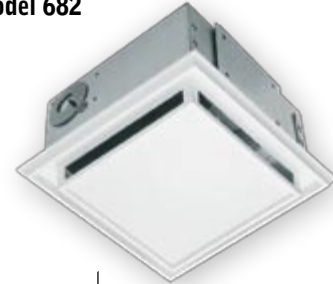
- Enclosed motors with long-life bearings for continuous operation
- Rugged metal fan grille for added durability, easier cleaning
- Grille torsion spring-mounted for easy installation
- Pre-wired outlet for plug-in motor plate
- AMCA licensed for both air and sound

Model	CFM	Sones
HD50	50	1.5
HD80	80	2.5

## Duct-free

This easy-to-install solution is ideal where air circulation is needed but ducting is impossible or impractical. Use it as a solution for half baths or rooms where humidity isn't a concern.

## Model 682



- Patented, fast snap-in metal housing installation
- Whisper-quiet fan circulates air past replaceable activated charcoal filter
- Fits 2" x 4" ceiling or wall construction

Model	CFM	Sones	Notes
682	—	—	Duct-free Circulation