

For Residential and Commercial Applications

Job Name		Engineer / Architect	
Job Location		Wholesaler	
Submittal Date		Contractor	

AU2 Male Gas Adapter - Male Flare x Male Iron Pipe

Use: For use with natural, manufactured, mixed, liquefied petroleum gases and LP gas-air mixtures.

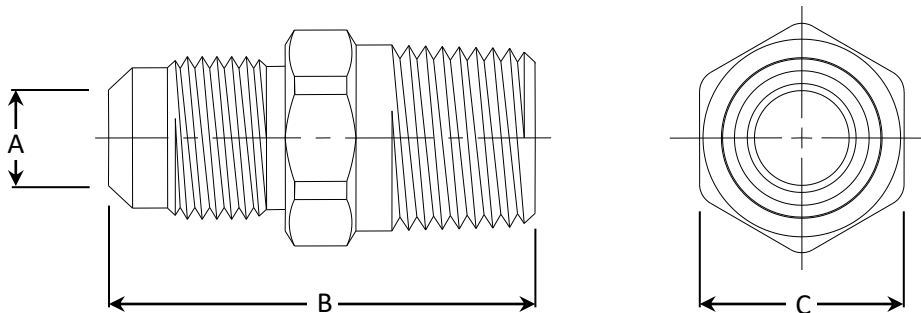
Operating Specifications:

Temperature: -40° - 150° F

Pressure: 1/2 PSI maximum

MATERIAL SPECIFICATIONS	
Brass Fitting	C36000 brass
Steel Fitting	Blue zinc-plated G10080 steel

PART DIMENSIONS (Inches)			
Model	DIA. A	DIM. B	DIM. C
AU2-8	0.438	1.81	7/8
AU2-8-6	0.438	1.61	3/4
AU2-6-8	0.312	1.78	7/8
AU2-6	0.312	1.55	11/16



Part Listing:

- AU2-6 3/8" OD flare x 3/8" MIP (1/8" FIP tapped), brass
- AU2-6 B 3/8" OD flare x 3/8" MIP (1/8" FIP tapped), brass, bulk packed
- AU2-6S 3/8" OD flare x 3/8" MIP (1/8" FIP tapped), steel
- AU2-6-8 3/8" OD flare x 1/2" MIP (3/8" FIP tapped), brass
- AU2-6-8 BT 3/8" OD flare x 1/2" MIP (3/8" FIP tapped), brass, generic bag
- AU2-6-8S 3/8" OD flare x 1/2" MIP (3/8" FIP tapped), steel
- AU2-6-8S B 3/8" OD flare x 1/2" MIP (3/8" FIP tapped), brass, bulk packed
- AU2-8-6 1/2" OD flare x 3/8" MIP, brass
- AU2-8-6S 1/2" OD flare x 3/8" MIP, steel
- AU2-8-6S B 1/2" OD flare x 3/8" MIP, steel, bulk

This specification and all information contained herein is the confidential and exclusive property of Brasscraft Manufacturing Co., and shall not be disclosed to others without the written consent of Brasscraft Mfg. Co. This specification must be returned to Brasscraft Mfg. Co. if requested.



AU2 Male Gas Adapter - Male Flare x Male Iron Pipe

Part Listing (con't):

<input type="checkbox"/>	AU2-8	1/2" OD flare x 1/2" MIP (3/8" FIP tapped), brass
<input type="checkbox"/>	AU2-8 B	1/2" OD flare x 1/2" MIP (3/8" FIP tapped), brass, bulk packed
<input type="checkbox"/>	AU2-8S	1/2" OD flare x 1/2" MIP (3/8" FIP tapped), steel
<input type="checkbox"/>	AU2-8-12S	1/2" OD flare x 3/4" MIP (1/2" FIP tapped), steel
<input type="checkbox"/>	AU2-14-12	7/8" OD flare x 3/4" MIP (1/2" FIP tapped), brass
<input type="checkbox"/>	AU2-14-16	7/8" OD flare x 1" MIP (3/4" FIP tapped), brass

Listings & Certifications:

- For use with CSA listed ANSI Z21.24 / CSA 6.10 connectors
- For use with CSA listed ANSI Z21.75 / CSA 6.27 connectors