

## Fig. 206

## Steel Side Beam Bracket

**Size Range:**  $\frac{3}{8}$ " through  $\frac{5}{8}$ "

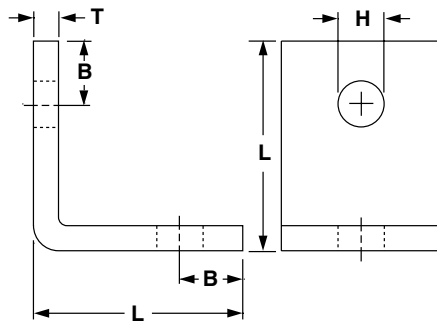
**Material:** Carbon steel

**Finish:**  Plain or  Zinc Plated (Hot-Dip Galvanized optional)

**Service:** Clip can be fastened to side of joist or wall to support hanger rod.

**Approvals:** Complies with Federal Specification A-A-1192A (Type 34), WW-H-171-E (Type 35) and ANSI/MSS SP-69 and MSS SP-58 (Type 34). UL Listed and FM Approved (steel beam only).

**Ordering:** Specify rod size, figure number, name and finish.



**FIG. 206: LOAD (LBS) • WEIGHT (LBS) • DIMENSIONS (IN)**

Rod Size A	Max Load		Weight (lbs).	L	B	Hole Size H	T
	With Lag Screw	With Bolt to Steel					
$\frac{3}{8}$	650	1,150	0.44	$2\frac{1}{16}$	$\frac{5}{8}$	$\frac{7}{16}$	$\frac{1}{4}$
$\frac{1}{2}$			0.43			$\frac{9}{16}$	
$\frac{5}{8}$	850	2,000	0.84	$2\frac{1}{2}$	$\frac{3}{4}$	$\frac{11}{16}$	$\frac{3}{8}$

PROJECT INFORMATION		APPROVAL STAMP	
Project:		<input type="checkbox"/> Approved	
Address:		<input type="checkbox"/> Approved as noted	
Contractor:		<input type="checkbox"/> Not approved	
Engineer:		Remarks:	
Submittal Date:			
Notes 1:			
Notes 2:			