



Straight Gas Ball Valve

Product Specifications

✓ To Submit	Part #	Size
	ML5210	1/2" IPS x 3/8" Flare
	ML5211	1/2" IPS x 1/2" Flare
	ML5221	3/4" IPS x 15/16" Flare

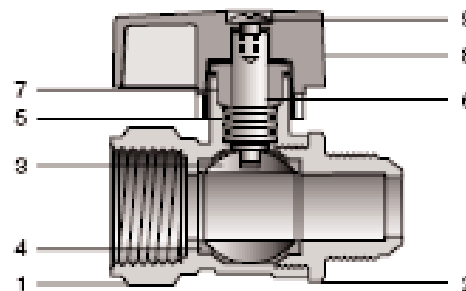
Product Features:

- 175 PSI Brass Body
- 2-Piece Body
- Threaded Ends
- CSA 1/2 & 5 PSI Approved
- ANSI Z.21.15



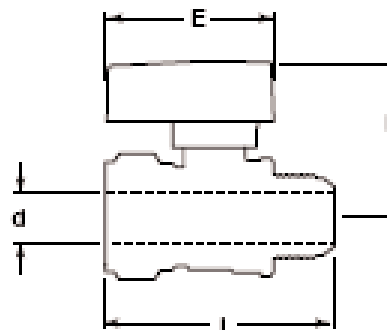
Materials & Specifications:

Item	Description	Material	Specification
1	Body	Brass	B283 C37700
2	End Piece	Brass	B283 C37700
3	Ball	Brass / Cr Plated	B283 C37700
4	Seat	PTFE	PTFE
5	Stem	Brass	B124 C37700
6	O-ring Packing	NBR	NBR
7	Packing Nut	Brass	B124 C37700
8	Handle	Aluminum	B85
9	Handle Bolt	Brass	B16 C36000



Dimensions (inches), Weights (lbs.), & Valve Data:

Size	ML5210	ML5211	ML5221
d	0.34	0.34	0.55
E	2	2	2
H	1.5	1.5	1.6
L	2.5	2.7	3
Wt	0.46	0.46	0.64



Warranty

See warranty information for more details.

All dimensions listed are nominal. MAINLINE® reserves the right to make product and material changes at any time without notice.



Contact your sales representative for more information or visit our website at mainlinecollection.com