



OWNER'S MANUAL

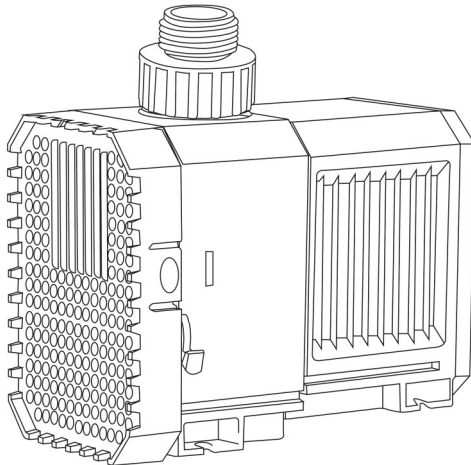
INSTALLATION AND OPERATION

INSTRUCTIONS FOR:

MAGNETIC DRIVE UTILITY/TRANSFER PUMP


MODEL: MLP70091

Included in MLP71650 Descaler Pump Kit



Safety Guidelines

Carefully read, understand and follow all safety instructions in this manual.

 This is the safety alert symbol. When you see this symbol, look for one of the following signal words.

DANGER Indicates a hazardous situation which, if not avoided, will result in death or serious injury.

CAUTION Indicates a hazardous situation which, if not avoided, could result in death or serious injury.

WARNING Indicates a hazardous situation which, if not avoided, could result in minor or moderate injury.

NOTICE Indicates important information, that if not followed, may cause damage to the equipment.

Safety Information

Read these warnings carefully. Know the application and limitations of this pump. Failure to follow these warnings could result in serious bodily injury and/or property damage.

DANGER This pump is supplied with a grounding conductor and grounding-type attachment plug. To reduce the risk of electric shock, ensure that it is connected only to a properly grounded, GFCI receptacle.

DANGER Do not allow any part of the cord, or plug to sit in water or in damp locations. If using an extension cord, use only a UL listed, 3-wire, grounding type cord.

DANGER Do not use to pump flammable or explosive liquids such as gasoline, kerosene, fuel oil, etc. Personal injury and / or death could result. Do not use this pump in a flammable or explosive environment. This pump is intended to pump clear water only.

DANGER Do not touch this pump while standing in or walking on wet surfaces until all power is turned off. Always disconnect the power source before attempting to install, service or perform maintenance. If the power source is out of sight, lock and tag in the off position to prevent unintended power application. Failure to do so could result in fatal electric shock. All wiring should be performed by a qualified electrician.

DANGER Do not run the pump dry. Running the pump dry can damage the internal parts of the pump or cause the pump to overheat which could result in personal injury. Running the pump dry will void the warranty.

WARNING This pump is equipped with a 3-wire, grounded cord and grounding type plug. Connect only to a properly grounded GFCI outlet. Never remove the grounding pin on the plug as this will make the pump unsafe to use and will also void the warranty.

WARNING This pump is not designed to handle salt water, brine, laundry discharge or any other application which may contain caustic chemicals and/or foreign materials. Pump damage could occur if used in these applications and will void warranty.

NOTICE Protect the pump from freezing conditions. Failure to protect pump and piping from freezing could cause severe damage and will void the warranty.

NOTICE Make sure the pump is placed on a solid foundation. Do not support the pump by the discharge hose.

Specifications

Models	Volts	Hz	Amps	Watts	Discharge	Construction	Max. Liquid Temp.
MLP70091	120	60	.45	55	1" & 3/4 GHT	Thermoplastic	120°F

Installation & Operation

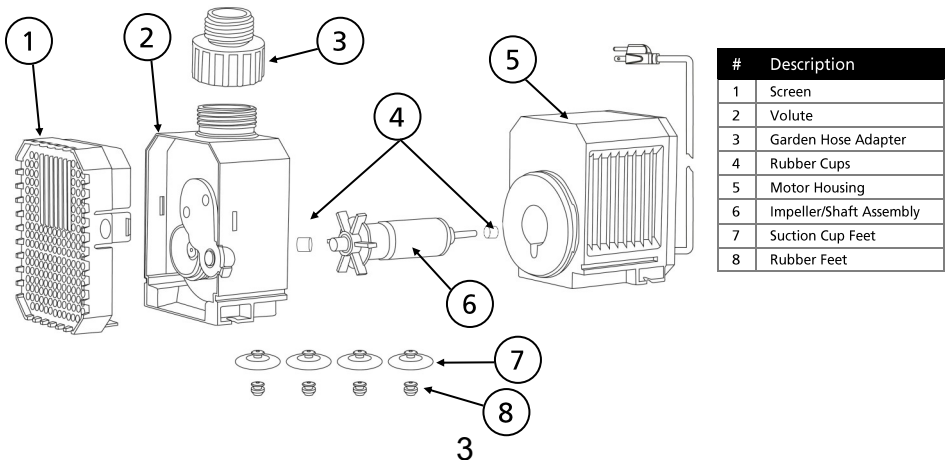
1. Connect a hose to the discharge port on the pump. If using the garden hose adapter, thread this onto the pump discharge and connect your garden hose.
2. Suction cup and rubber feet are provided for use with the pump if desired. To install simply slide them into the notches on the bottom of the pump.
3. To turn the pump on, connect the plug to a properly grounded GFCI outlet. Operate the pump in clear water only. Ensure water is free from debris such as leaves, mud, silt or sand.
4. The pump will operate in any direction as long as the volute is submerged in water.
5. Adjust the flow rate by sliding the flow control lever up or down.
6. When pumping is complete, unplug the unit from the outlet.

Cleaning & Maintenance

Consult the illustration below for proper disassembly and assembly of the pump

1. This pump is permanently lubricated. No further lubrication is required.
2. To clean the front screen (1), gently press the tabs on each side of the screen and pull it away from the volute. Rinse with water and/or clean with soft bristle brush.
3. To remove/clean the impeller, turn the volute housing (2) 1/4 turn counter-clockwise. The impeller/motor shaft assembly (6) can now be removed from the pump body. Remove any debris by rinsing with water and/or by using a soft bristle brush.
4. When removing the impeller/shaft assembly (6), the rubber end cups (4) may come out with the impeller assembly or they may remain in the volute and motor housing. Ensure they are securely inserted into the volute and motor housing when re-assembling the pump.
5. Re-assemble the pump in reverse order.
6. Before each use, inspect the power cord to ensure it is in good condition. DO NOT use the pump if there are any cuts or bare wires showing on the power cord as electric shock may result.

Parts Illustration



LIMITED WARRANTY - MAGNETIC DRIVE PUMPS:

Manufacturer warrants the products specified in this warranty to be free from defects in material or workmanship for one (1) year from date of purchase. During the time period and subject to the terms and conditions, the manufacturer will repair or replace to the original user or consumer any portion of this product which proves to be defective due to materials or workmanship. At all times the manufacturer shall have and possess the sole right and option to determine whether to repair or replace defective equipment, parts, or components. The manufacturer has the option to inspect any product returned under warranty to confirm that the warranty applies before repair or replacement under warranty is approved. This warranty sets forth the manufacturer's sole obligation and purchaser's exclusive remedy for defective product. Return defective product to the place of purchase for warranty consideration.

WARRANTY PERIOD - PRODUCTS:

If, within the duration of product use by the original user, this product proves to be defective due to materials or workmanship, the product shall be repaired or replaced at the manufacturer's option, subject to the terms and conditions set forth in this warranty statement. Proof of purchase is required for warranty consideration. In the absence of suitable proof of the purchase date, the effective period of this warranty is 12 months from the product's date of manufacture.

LABOR, ETC. COSTS:

The manufacturer shall IN NO EVENT be responsible or liable for the cost of field labor or other charges incurred by any customer in removing and/or affixing any product, part, or component thereof.

PRODUCT IMPROVEMENTS:

The manufacturer reserves the right to change or improve its products or any portions thereof without being obligated to provide such a change or improvement for units sold and/or shipped prior to such change or improvement.

GENERAL TERMS AND CONDITIONS:

This warranty shall not apply to damage due to acts of God, normal wear and tear, normal maintenance services and the parts used in connection with such service, lightning or conditions beyond the control of the manufacturer, nor shall it apply to products which, in the sole judgment of the manufacturer, have been subject to negligence, abuse, accident, misapplication, tampering, alteration; nor due to improper installation, operation, maintenance or storage; nor to excess of recommended maximums as set forth in the instructions. Warranty will be VOID if any of the following conditions are found:

1. Product is used for purposes other than those for which it was designed and manufactured
2. Product not installed in accordance with applicable codes, ordinances, and good trade practices
3. Product connected to voltage other than indicated on nameplate or labels
4. Pump exposed to but not limited to the following: sand, gravel, cement, grease, plaster, mud, tar, oil, gasoline, solvents or other abrasive or corrosive substances
5. Pump has been used for pumping liquids above 120°F
6. Pump allowed to operate dry (liquid supply cut off)

DISCLAIMER:

Any oral statements about the product made by the seller, the manufacturer, the representatives, or any other parties do not constitute warranties, shall not be relied upon by the user, and are not part of the contract for sale. Seller's and the manufacturers only obligation, and buyer's only remedy, shall be the replacement and/or repair by the manufacturer of the product as described above. NEITHER SELLER NOR THE MANUFACTURER SHALL BE LIABLE FOR ANY INJURY, LOSS OR DAMAGE, DIRECT, INCIDENTAL OR CONSEQUENTIAL (INCLUDING, BUT NOT LIMITED TO, INCIDENTAL OR CONSEQUENTIAL DAMAGES FOR LOST PROFITS, LOST SALES, INJURY TO PERSON OR PROPERTY, OR ANY OTHER INCIDENTAL OR CONSEQUENTIAL LOSS), ARISING OUT OF THE USE OR THE INABILITY TO USE THE PRODUCT, AND THE USER AGREES THAT NO OTHER REMEDY SHALL BE AVAILABLE TO IT. Before using, the user shall determine the suitability of the product for his/her intended use, and user assumes all risk and liability whatsoever in connection therewith.

THE WARRANTY AND REMEDY DESCRIBED IN THIS LIMITED WARRANTY IS AN EXCLUSIVE WARRANTY AND REMEDY AND IS IN LIEU OF ANY OTHER WARRANTY OR REMEDY, EXPRESSED OR IMPLIED, WHICH OTHER WARRANTIES AND REMEDIES ARE HEREBY EXPRESSLY EXCLUDED, INCLUDING BUT NOT LIMITED TO ANY IMPLIED WARRANTY OF MERCHANTABILITY OR FITNESS FOR A PARTICULAR PURPOSE, TO THE EXTENT EITHER APPLIES TO A PRODUCT SHALL BE LIMITED IN DURATION TO THE PERIODS OF THE EXPRESSED WARRANTIES GIVEN ABOVE.

Some states and countries do not allow the exclusion or limitations on how long an implied warranty lasts or the exclusion or limitation of incidental or consequential damages, so the above exclusion or limitations may not apply to you. This warranty gives you specific legal rights, and you may also have other rights which vary from state to state.

**Effective July 1, 2023, due to an update in California law, the start date for product warranties will now be aligned with the date of delivery of the product. This change is for all Mainline products purchased on or after July 1, 2023 by California consumers. (California Legislative Information AB-2912)*